

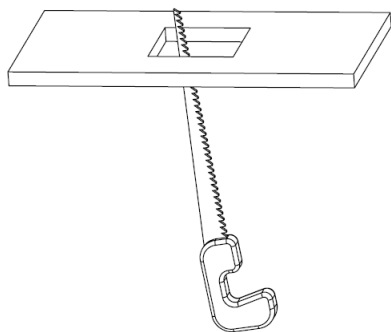
RECESSED DIVA INSTALLATION INSTRUCTIONS



WARNING - RISK OF FIRE AND ELECTRICAL SHOCK. FIXTURE MUST BE INSTALLED BY A QUALIFIED ELECTRICIAN ONLY. FIXTURE IS INTENDED FOR INSTALLATION IN ACCORDANCE WITH THE NATIONAL ELECTRICAL CODE, LOCAL AND FEDERAL SPECIFICATIONS. DISCONNECT POWER AT ELECTRICAL PANEL BEFORE SERVICING. CONNECTION OF LUMINAIRE TO POWERED DRIVER WILL RESULT IN PERMANENT DAMAGE TO THE LED AND VOIDED PRODUCT WARRANTY. RETAIN THESE INSTRUCTIONS FOR MAINTENANCE REFERENCE.

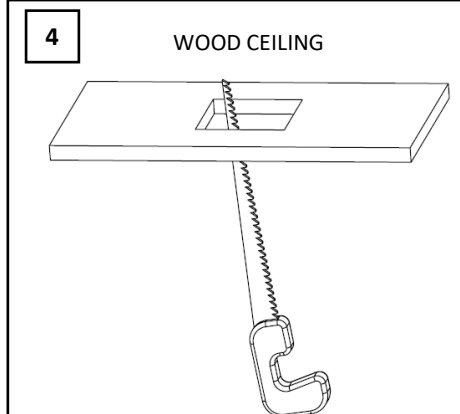
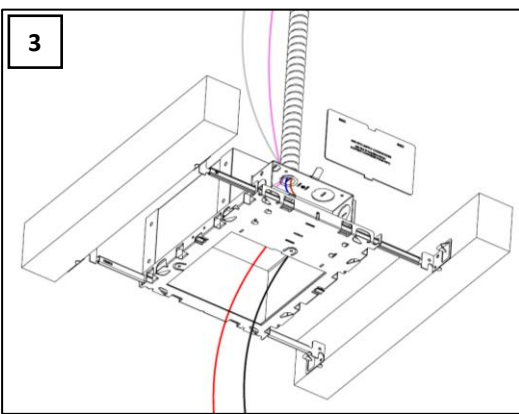
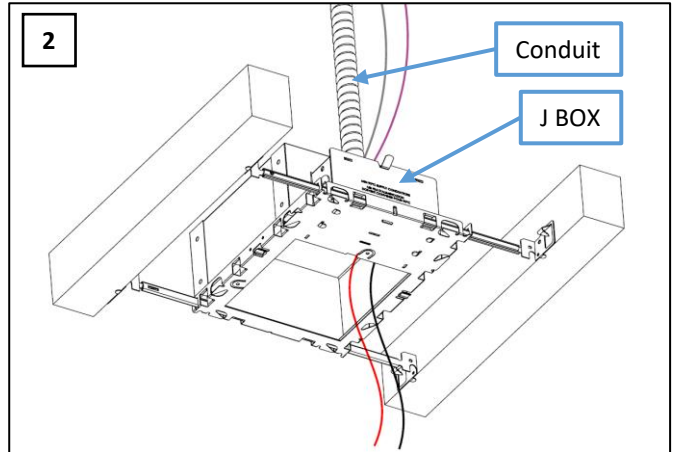
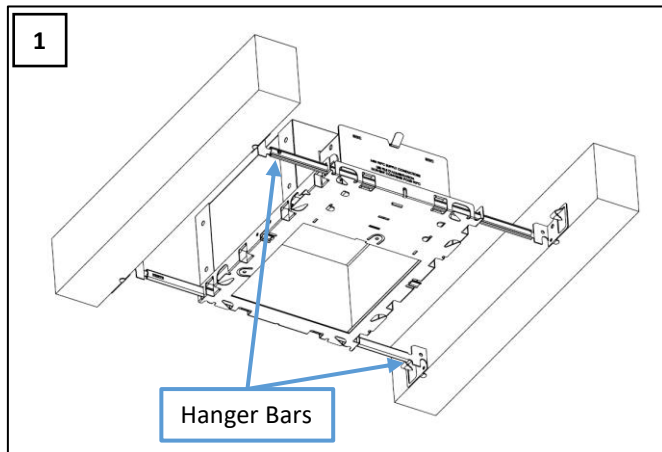
MATERIALS USED FOR CEILING FIXATION SHOULD CONFORM TO THE RELEVANT BUILDING REGULATIONS.

CUTOUT TABLE



FIXTURE	CUTOUT
DIVA 2 RS	85mm X 96mm / 3.35" X 3.78"
DIVA 2 RD	85mm X 172mm / 3.35" X 6.77"
DIVA 2 RT	85mm X 248mm / 3.35" X 9.76"
DIVA 2 RQ	159mm X 170mm / 6.26" X 9.76"
DIVA 3 RS	109mm X 120mm / 4.29" X 4.72"
DIVA 3 RD	109mm X 220mm / 4.29" X 8.66"
DIVA 3 RT	109mm X 320mm / 4.29" X 12.60"
DIVA 3 RQ	209mm X 220mm / 8.23" X 8.66"
DIVA 5 RS	159mm X 170mm / 6.26" X 6.69"
DIVA 5 RD	159mm X 320mm / 6.26" X 12.60"
DIVA 5 RT	159mm X 470mm / 6.26" X 18.50"
DIVA 5 RQ	309mm X 320mm / 12.17" X 12.60"

IC / NON-IC BOX INSTALLATION (NEW CONSTRUCTION)



NOTE:

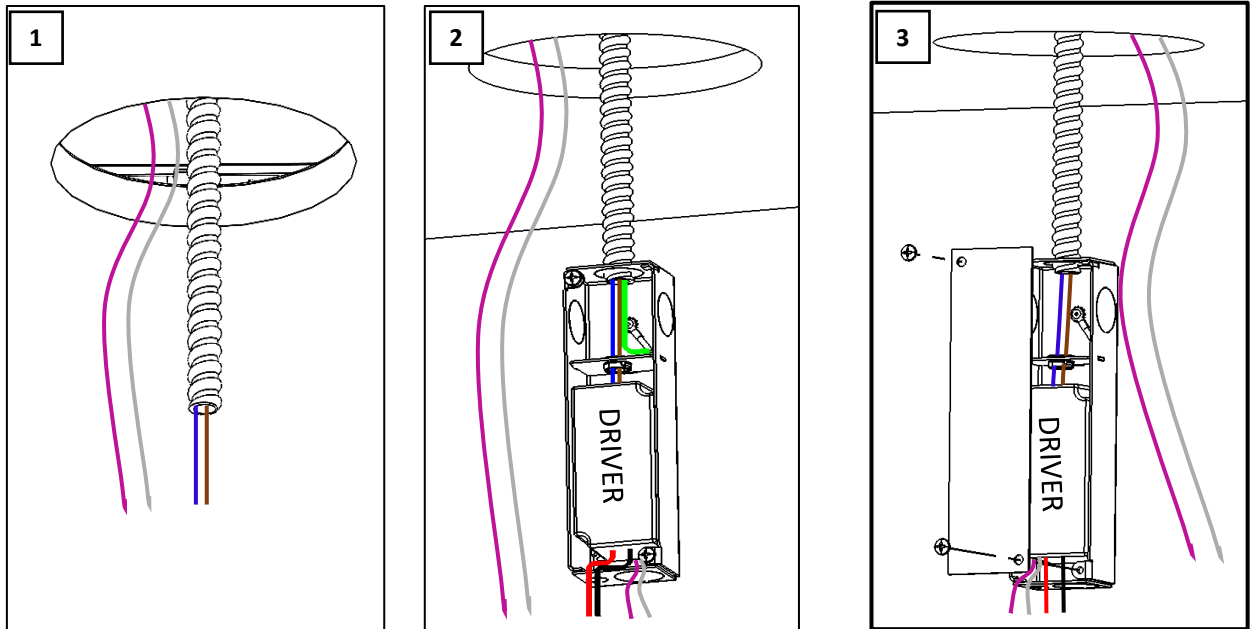
IN CASE OF
CLASS 2 NON-IC
BOX, USE MINI
RETRO FIT /
RETRO FIT BOX
FOR THE
DRIVER.

NOTE:

- IN CASE OF ELV, NON-DIM AND BLUETOOTH DRIVER, PURPLE & GRAY WIRES ARE ABSENT.
- RUNNING 0-10V DIMMING WIRES IN THE SAME CONDUIT AS LINE VOLTAGE IS NOT RECOMMENDED. THEY NEED TO BE RAN SEPARATELY OR AT LEAST SEPARATED BY A CONTINUOUS BARRIER.

1. INSTALL IC RATED BOX USING HANGER BARS ABOVE THE CEILING. (FIGURE 1).
2. KNOCK OUT A HOLE IN THE J BOX AND RUN THE CONDUIT THROUGH IT. (FIGURE 2).
3. OPEN THE J BOX COVER PLATE AND PLACE THE DRIVER INSIDE THE J BOX AND CONNECT TO THE POWER LINES PULLED THROUGH THE CONDUIT. (FIGURE 3)
4. IF IT IS A 0-10V DRIVER, CONNECT THE WIRE (PURPLE AND GRAY) TO THE DIMMER MODULE. AND RUN THE LOW VOLTAGE WIRE (RED & BLACK) THROUGH THE IC BOX, OUT THROUGH THE OPENING BEFORE INSTALLING THE DRYWALL CEILING. (FIGURE 3)
5. CUT A HOLE IN THE WOODEN CEILING USING THE CUT-OUT TABLE AS A REFERENCE. CNC MILLING CUT IS STRONGLY ADVISED. (FIGURE 4)

MINI RETROFIT/ RETROFIT BOX INSTALLATION

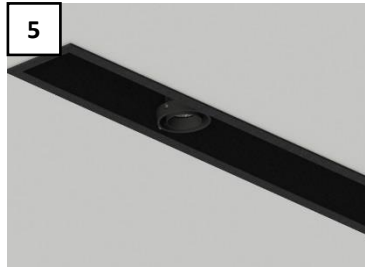
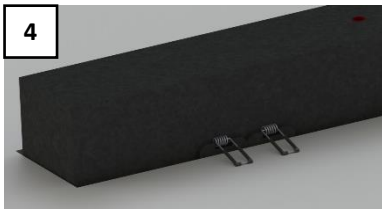
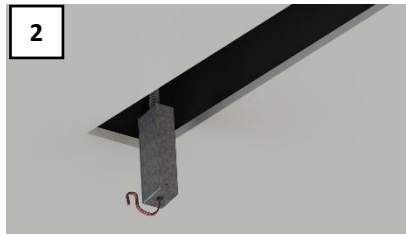
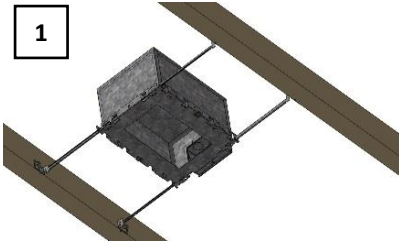


NOTE:

- IN CASE OF ELV, NON-DIM AND BLUETOOTH DRIVER, PURPLE & GRAY WIRES ARE ABSENT.
- RUNNING 0-10V DIMMING WIRES IN THE SAME CONDUIT AS LINE VOLTAGE IS NOT RECOMMENDED. THEY NEED TO BE RAN SEPARATELY OR AT LEAST SEPARATED BY A CONTINUOUS BARRIER.

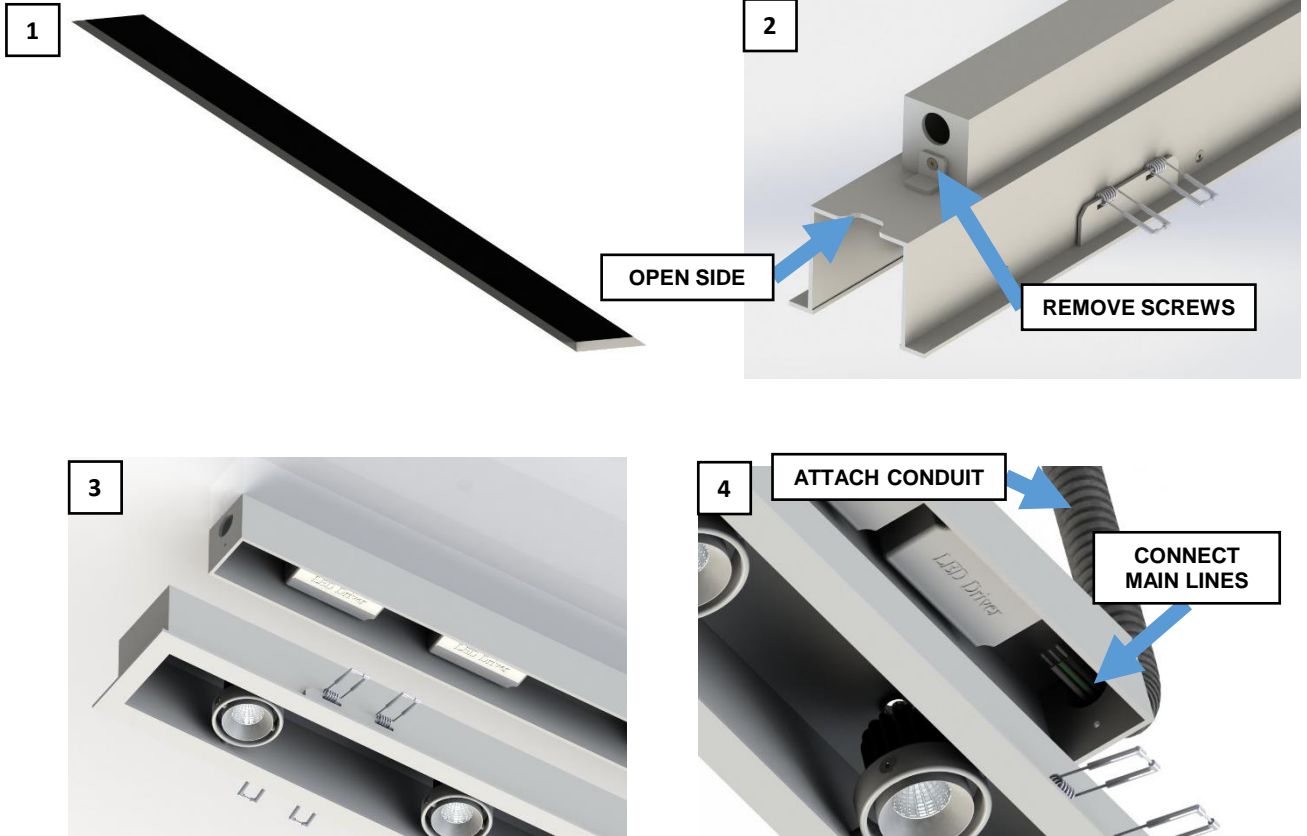
1. CUT A HOLE IN THE CEILING DRYWALL AS PER THE CUT-OUT TABLE. ATTACH THE DRY WALL CEILING AND FINISH. MAKE SURE THE FLEXIBLE CONDUIT (RED & BLACK) AND DIMMING WIRES (PURPLE & GRAY) FROM THE DIMMER MODULE MUST HANG OUT SLIGHTLY FROM THE OPENING. (FIGURE 1)
2. REMOVE COVER OF THE RETROFIT BOX, KNOCK OUT AN APPROPRIATE SIZED OPENING PER THE CONDUIT BEING USED. ATTACH THE CONDUIT TO THE RETROFIT BOX USING A SUITABLE GROMMET, CONNECT THE GREEN GROUND WIRE FROM THE RETROFIT BOX TO THE GROUND WIRE FROM THE CEILING. CONNECT POWER SUPPLY WIRES FROM THE DRIVER TO THE MAIN LINE WIRES ON THE CEILING. BLUE TO NEUTRAL AND BROWN TO LINE. (FIGURE 2)
3. IF USING A 0-10V DRIVER, CONNECT THE WIRES (PURPLE & GRAY) TO THE WIRE COMING FROM THE DIMMER MODULE USING THE WAGO.
4. ATTACH RETROFIT BOX COVER USING THE PROVIDED TWO SCREWS. (FIGURE 3)

INTEGRATED DRIVER FIXTURE INSTALLATION



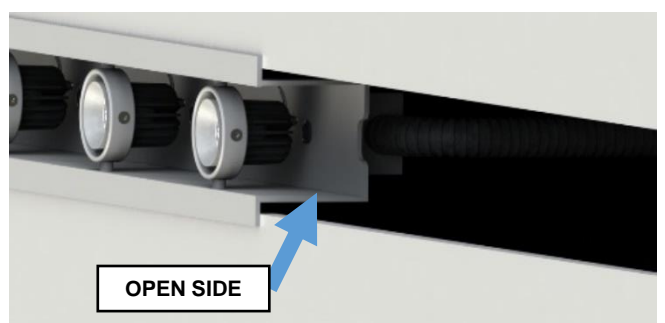
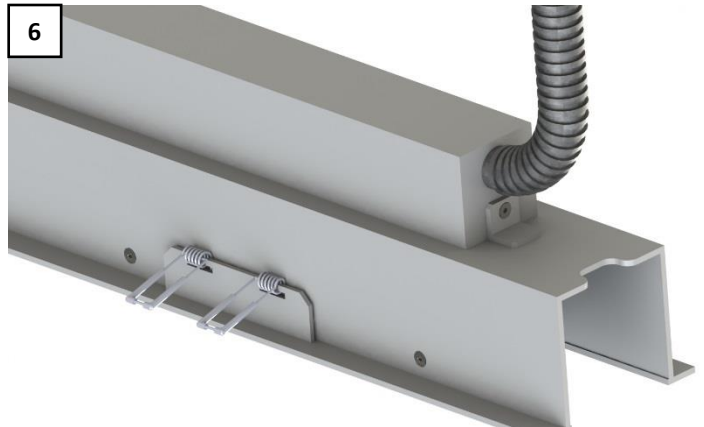
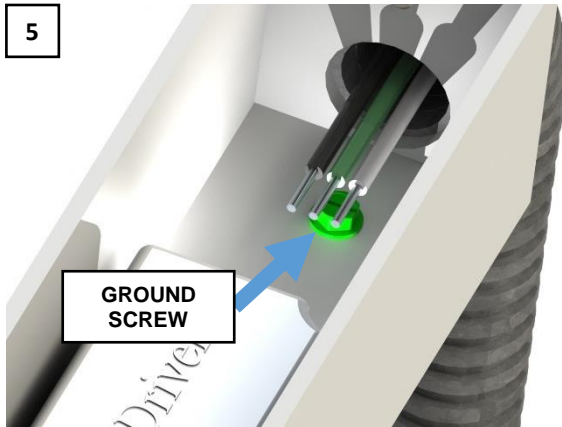
-
1. IF USING AN ENCLOSURE, INSTALL IT USING THE HANGER BARS THAT COMES WITH IT. SEE ENCLOSURE INSTALLATION INSTRUCTIONS FOR FURTHER INFORMATION (FIGURE 1).
 2. CUT AN OPENING IN THE CEILING PER CUTOUT TABLE GIVEN IN PREVIOUS PAGE OR USE THE OPENING ON THE IC BOX IF AVAILABLE, AS A REFERENCE. INSTALL POWER SUPPLIES INSIDE THEIR RESPECTIVE RETROFIT HOUSINGS AND MAKE ELECTRICAL CONNECTIONS TO THE MAIN LINES. BLACK TO BLACK, WHITE TO WHITE AND GREEN TO GREEN. SEE RETROFIT ENCLOSURE INSTALLATION INSTRUCTIONS FOR FURTHER INFORMATION (FIGURE 2).
 3. CONNECT EACH POWER SUPPLY TO AN LED MODULE USING PROVIDED WAGO CONNECTORS. BLACK TO BLACK, RED TO RED. (CABLES SHOWN IN FIGURE 2, CONNECTORS FIGURE 3)
 4. AFTER EACH MODULE IN THE SECTION HAS BEEN CONNECTED, INSTALL IN THE CEILING OPENING USING THE SPRINGS TO SECURE FROM THE TOP OF THE CEILING. (FIGURE 4).
 5. ORIENT EACH LIGHT ENGINE TO ACHIEVE THE DESIRED LIGHT DISTRIBUTION. PROCEED TO SWITCH POWER ON. (FIGURE 6)
-

INTEGRATED DRIVER FIXTURE INSTALLATION



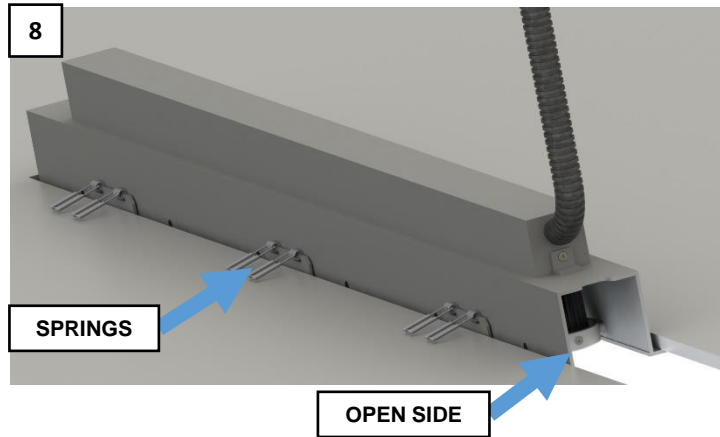
1. CUT OUT A SQUARE HOLE PER DIMENSIONS ON THE CUT OUT TABLE. (FIGURE 1)
2. REMOVE 2 SCREWS TO RELEASE DRIVER COMPARTMENT. (FIGURE 2)
3. CAREFULLY REMOVE DRIVER COMPARTMENT COVER (FIGURE 3).
4. ATTACH ½" FLEXIBLE CONDUIT TO THE HOLE NEXT TO THE OPEN SIDE OF THE DIVA BOX. (FIGURE 4).

INTEGRATED DRIVER FIXTURE INSTALLATION



5. ATTACH GROUND WIRE TO GROUND SCREW PROVIDED TO GROUND THE FIXTURE. USING SUPPLIED WAGO CONNECTORS, CONNECT THE WHITE WIRE FROM THE FIXTURE TO THE NEUTRAL LINE, AND THE BLACK WIRE FROM THE FIXTURE TO THE HOT WIRE. (FIGURE 5)
6. ATTACH DRIVER COMPARTMENT COVER USING SCREWS PREVIOUSLY REMOVED (FIGURE 6).
7. INSTALL THE FIRST SECTION IN THE CEILING MAKING SURE THAT THE OPEN SIDE IS LOCATED IN THE MIDDLE OF THE OPENING. (FIGURE 7)

INTEGRATED DRIVER FIXTURE INSTALLATION



-
8. USE SPRINGS TO SUPPORT THE SECTION IN THE CEILING. (FIGURE 8)
 9. REPEAT STEPS 2 THROUGH 8 FOR THE SECOND SECTION OF THE FIXTURE.
 10. ORIENT THE LIGHT ENGINES ON THE FIXTURE FOR THE DESIRED DISTRIBUTION AND POWER ON THE FIXTURE. (FIGURE 6)